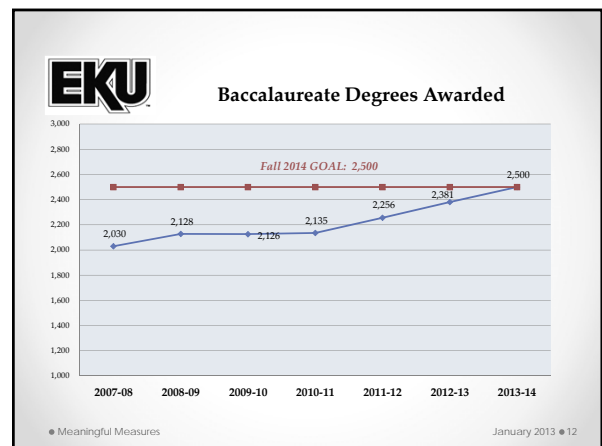
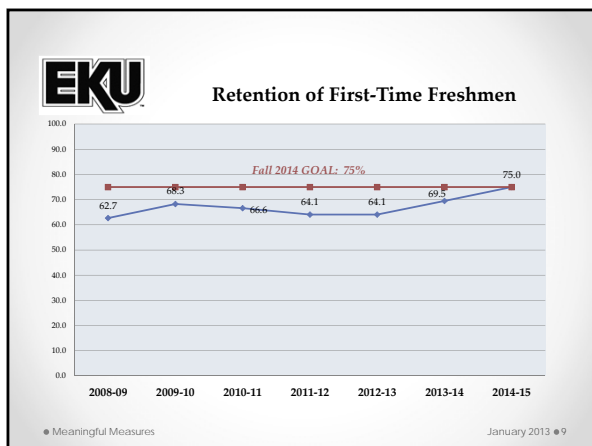
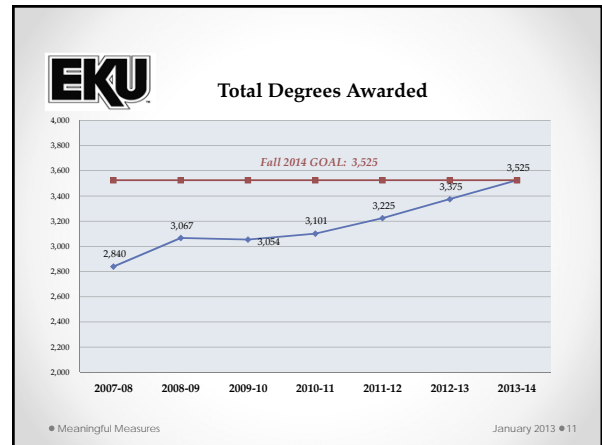
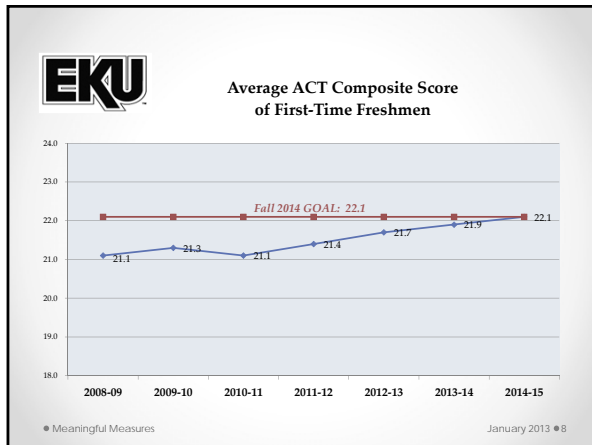
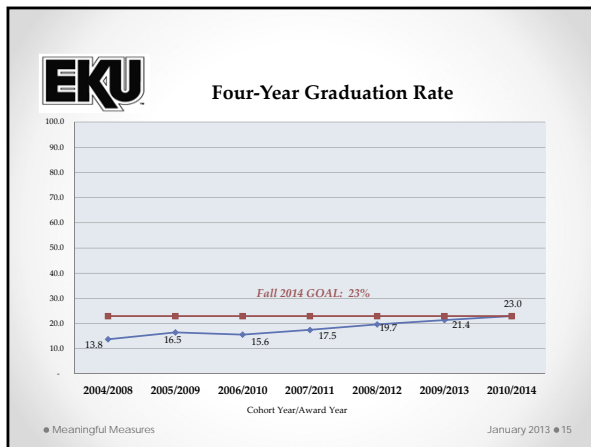
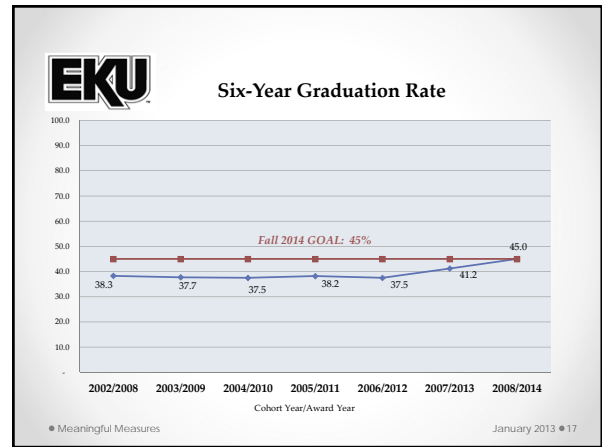
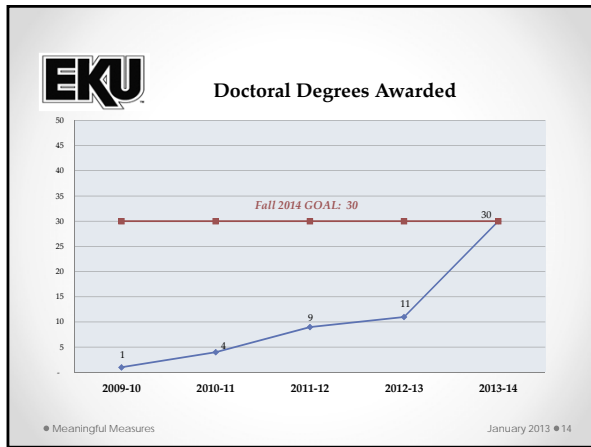
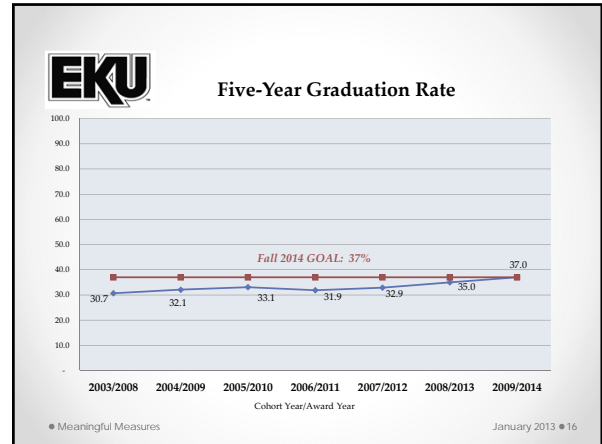
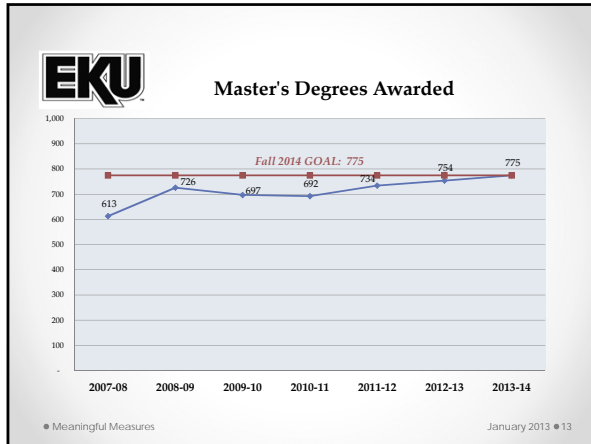


Retention by College

College	Retained		Retained/Graduated		
	First-Time Freshmen	New Transfers	Sophomores	Juniors	Seniors
Fall 11 to Fall 12					
Arts & Sciences	64.7%	69.1%	77.8%	83.8%	84.6%
Business & Tech	69.7%	71.3%	79.7%	84.4%	79.5%
Education	73.9%	80.0%	83.2%	86.8%	90.5%
Health Sciences	69.0%	72.6%	80.5%	83.2%	81.4%
Justice & Safety	68.8%	70.5%	77.3%	77.1%	80.1%

Meaningful Measures January 2013 • 10





Six-Year Graduation Rate by College

	Cohort Year/Award Year				
	2002/2008	2003/2009	2004/2010	2005/2011	2006/2012
EKU	38.3%	37.7%	37.5%	38.2%	37.5%
Arts & Sciences	46.0%	43.4%	44.1%	40.8%	43.9%
Business & Tech	42.0%	44.3%	41.9%	45.1%	41.1%
Education	56.9%	57.9%	55.6%	53.8%	45.5%
Health Sciences	44.9%	48.6%	50.4%	42.7%	43.5%
Justice & Safety	44.0%	50.0%	48.8%	49.3%	42.8%
Goal	45.0%	45.0%	45.0%	45.0%	45.0%

Meaningful Measures January 2013 • 18